



Pierce Arrow XT Pumper
Hamilton Township Fire District 4
Job #29208

FEATURES & SPECIFICATIONS

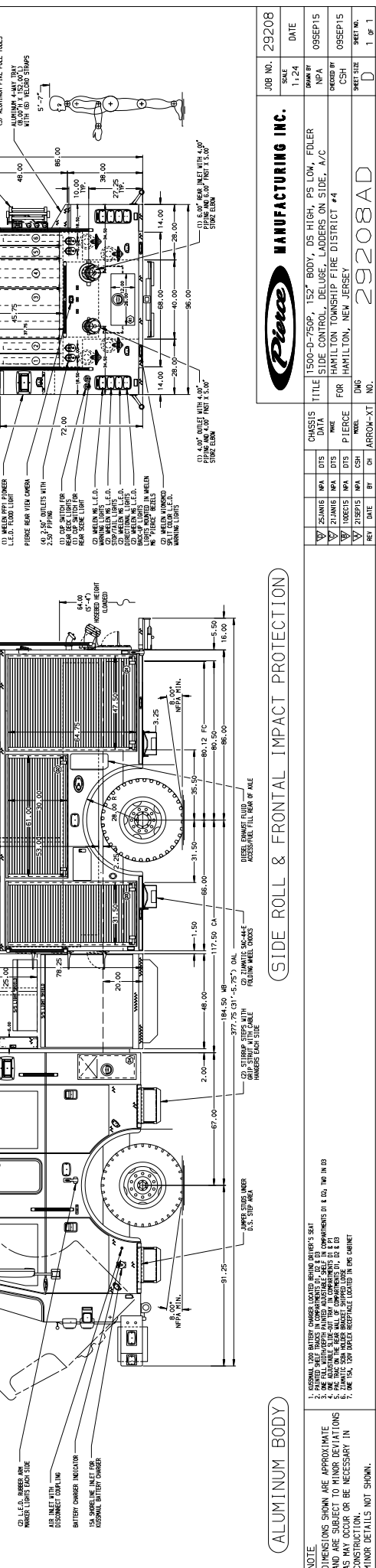
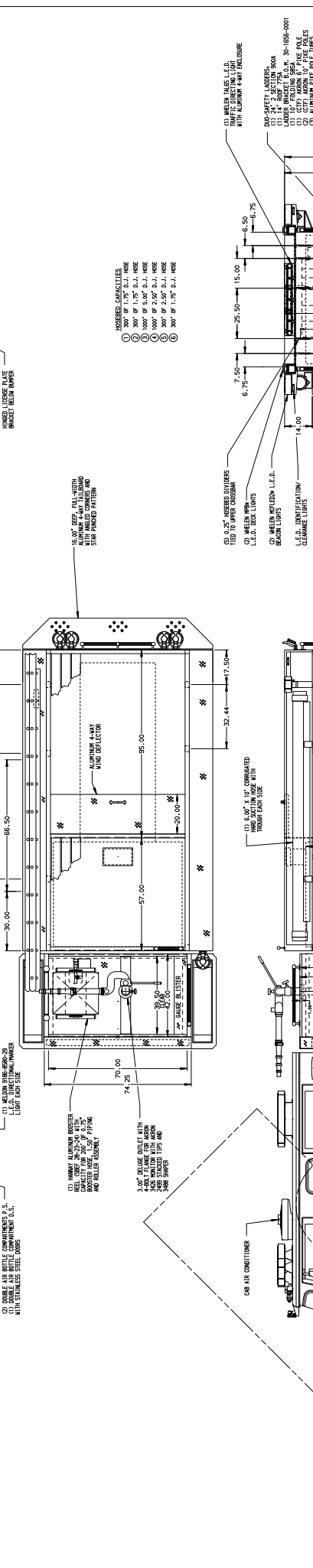
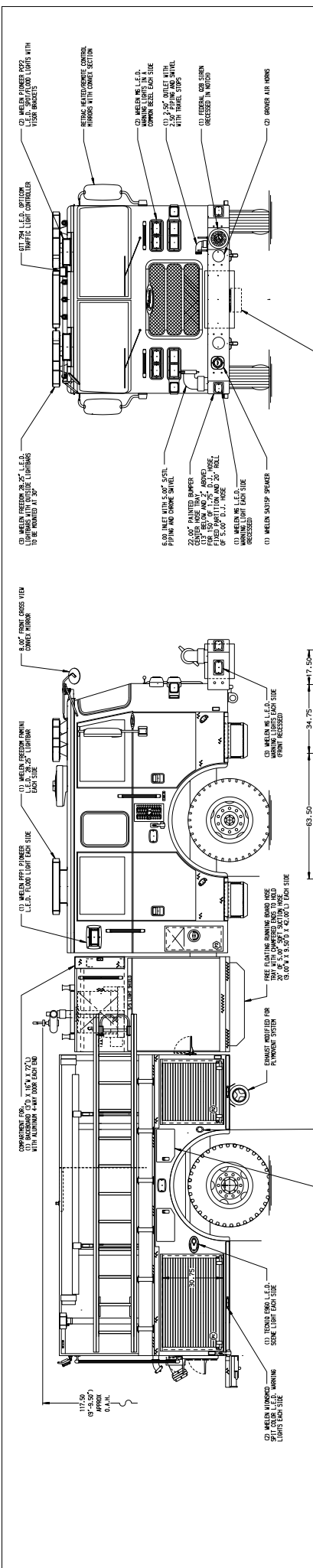
- Pierce Arrow XT 67" Chassis with Flat Roof
- Cummins ISL9 450 hp Engine
- Allison EVS3000 P Automatic Transmission
- Waterous CSU 1500 GPM Single Stage Pump
- Oshkosh TAK-4 Independent Front Suspension
- 750 Gallon Poly Tank
- Delivered in June 2016



FIRE & SAFETY SERVICES, LTD.

South Plainfield, NJ

web: www.f-ss.com · phone: 800-400-8017



ALUMINUM BODY		SIDE ROLL & FRONTAL IMPACT PROTECTION		Pierce MANUFACTURING INC.		JOB NO. 29208
1. ORIGINAL 1200 BATTERY CHARGER LOCATED BEHIND DRIVER'S SEAT 2. ONE FULL WIDTH PAINTED ALUMINUM SHEET IN COMPARTMENTS D1 & D2, 100 IN. BS 3. ONE FULL WIDTH PAINTED ALUMINUM SHEET IN COMPARTMENTS E1 & E2 4. ONE FULL WIDTH PAINTED ALUMINUM SHEET IN COMPARTMENTS F1 & F2 5. ONE FULL WIDTH PAINTED ALUMINUM SHEET IN COMPARTMENTS G1 & G2 6. ONE 154, 1200 BATTERY CHARGER LOCATED TO THE CABINET 7. ONE 154, 1200 BATTERY CHARGER LOCATED TO THE CABINET		CHASSIS DATA MAKE PIERCE MODEL DNG PART # ARRON-XT		TITLE 1500-D-750P, 152" BODY, DS HIGH, PS LOW, FOLDER SIDE CONTROL, DELUGE, LADDERS ON SIDE, A/C FOR HAMILTON TOWNSHIP FIRE DISTRICT #4 HAMILTON, NEW JERSEY		SCALE 1:1.24 DATE DRAWN BY OSSEP/S CHECKED BY OSSEP/S SHEET NO. D 1 OF 1