



Pierce Saber Pumper
Village of Ridgewood
Job #30755

FEATURES & SPECIFICATIONS

- Pierce Saber 70" Chassis with a Flat Roof
- Cummins L9 450 hp 2017 EPA compliant Engine
- Allison EVS3000P Automatic Transmission
- Waterous 1500 GPM Two Stage Pump
- Meritor Front and Rear Axles
- 500 Gallon Poly Tank
- Delivered in August 2017



FIRE & SAFETY SERVICES, LTD.

South Plainfield, NJ

web: www.f-ss.com · phone: 800-400-8017

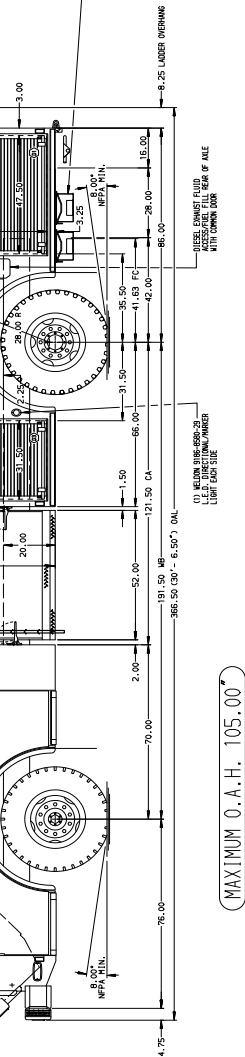
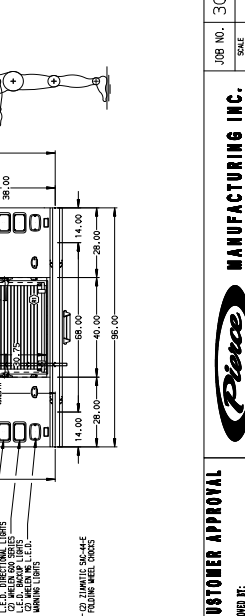
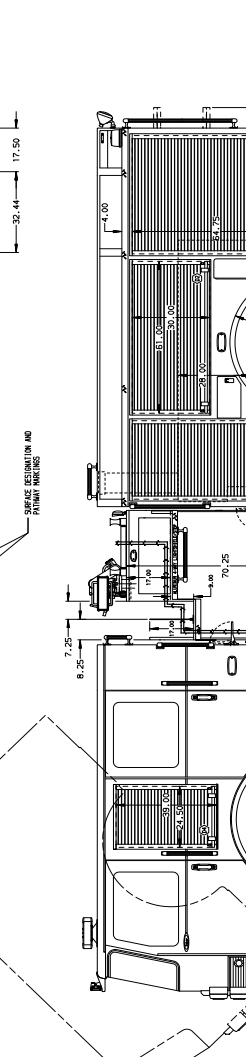
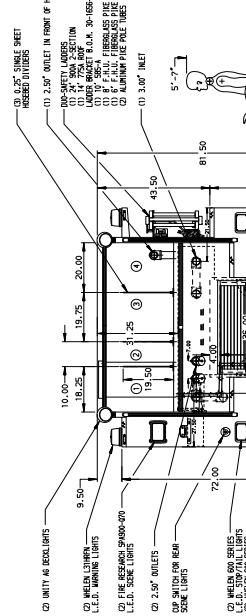
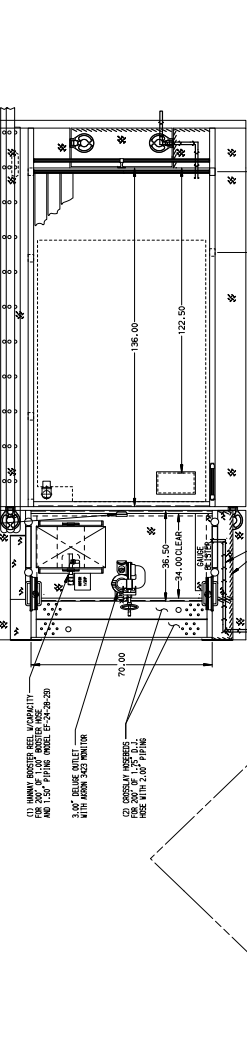
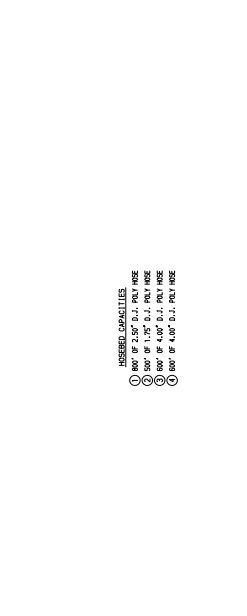
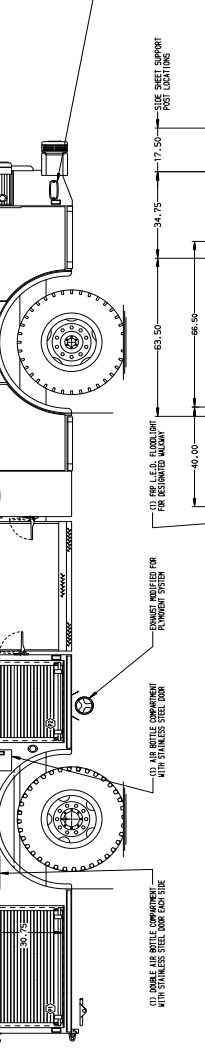
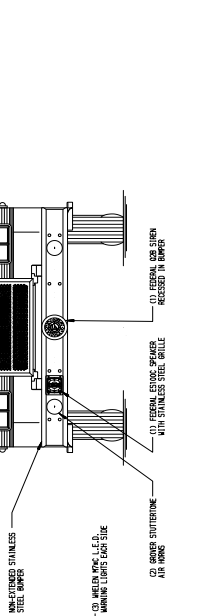
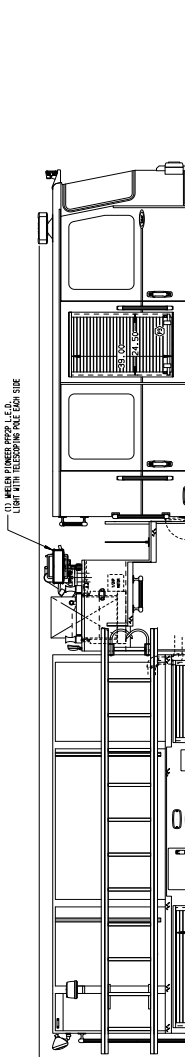
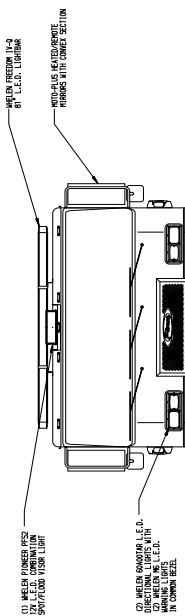
CUSTOMER APPROVAL
 APPROVED BY: _____
 DATE: _____

MANUFACTURING INC.
Pierce

JOB NO. 30755
 SCALE 1:1.24
 DRAWN BY CSQ
 CHECKED BY CSH
 SHEET NO. D
 1 OF 1

CHASSIS DATA
 TITLE 1500-D-500P - 152" DS FH FILER, PS LOM FILER
 MAKE PIERCE
 MODEL INVERTER
 VIN. NO. _____
 REFR. DATE _____
 BY CH SABER TRJ NO. 30755AD

NOTE:
 DIMENSIONS SHOWN ARE APPROXIMATE
 AND ARE SUBJECT TO MINOR DEVIATIONS
 AS MAY OCCUR OR BE NECESSARY IN
 CONSTRUCTION.
 FINISH DETAILS NOT SHOWN.



NOTE:
 DIMENSIONS SHOWN ARE APPROXIMATE
 AND ARE SUBJECT TO MINOR DEVIATIONS
 AS MAY OCCUR OR BE NECESSARY IN
 CONSTRUCTION.
 FINISH DETAILS NOT SHOWN.

ALUMINUM BODY
 MAXIMUM O. A. H. 105.00"