



**Pierce Enforcer Heavy Duty Rescue Pumper**  
Borough of Mountainside  
Job #36281

**FEATURES & SPECIFICATIONS**

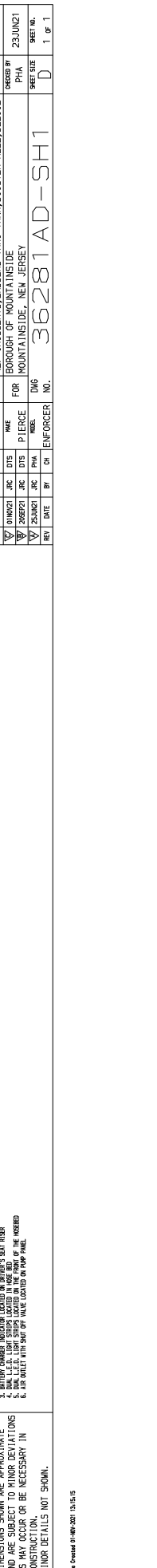
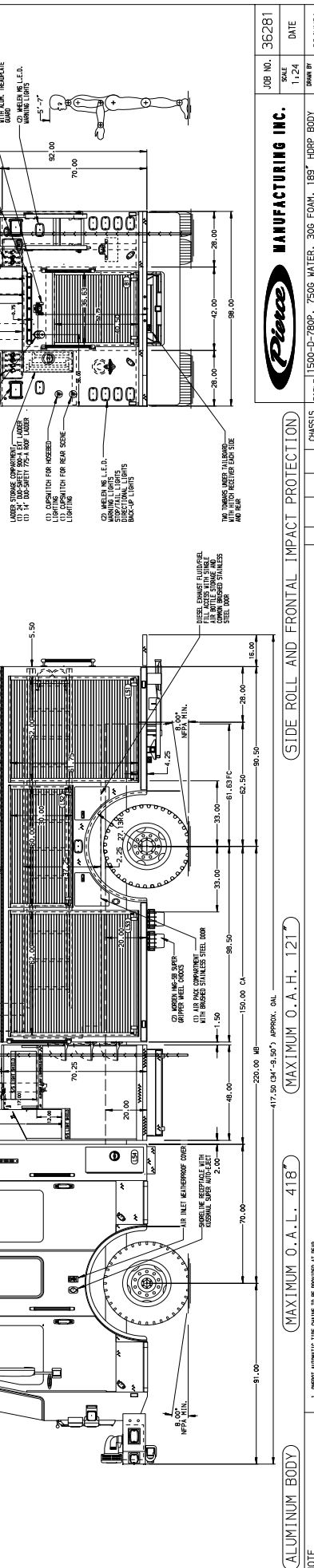
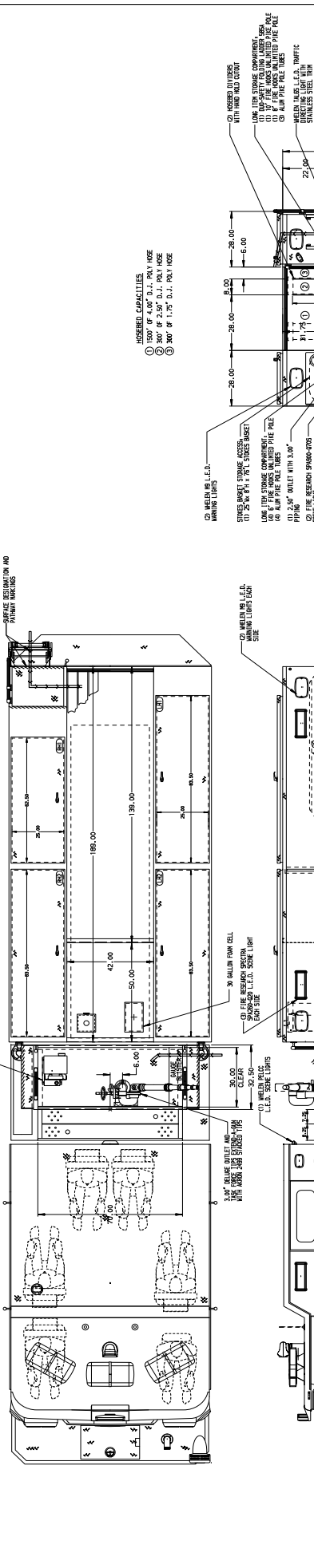
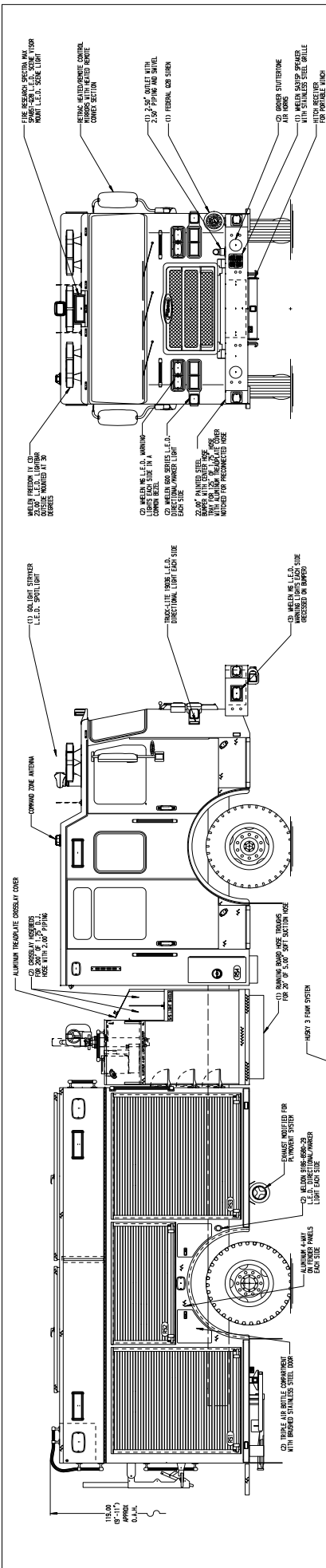
- Pierce Enforcer 70" Chassis with a 10" Raised Roof
- Cummins X12 500hp 2021 EPA compliant Engine
- Allison EVS4500P Automatic Transmission
- Meritor Front and Rear Axles
- Waterous CSU 1500 GPM Single Stage Pump
- 750 Gallon Poly Water Tank
- Husky 3 Single Agent Foam System
- Delivered in May 2022



***FIRE & SAFETY SERVICES, LTD.***

South Plainfield, NJ

web: [www.f-ss.com](http://www.f-ss.com) · phone: 800-400-8017



JOB NO. 36281		DATE
SCALE 1:24		DATE
DRAWN BY JRC		DATE 22 JUN 21
CHECKED BY PJA		DATE 23 JUN 21
SHEET NO. D		SHEET NO. 1 OF 1

**Pierce** MANUFACTURING INC.

TITLE 1500-D-780P, 750G WATER, 30G FOAM, 185" HDBR BODY  
 (2) CROSSELAYS, LADDERS THRU TANK, BOOSTER REEL, DELUGE

FOR MOUNTAIN INSIDE, NEW JERSEY

DWG NO. 36281AD-SH1

CHASSIS DATA	DATE	BY	CHK	ENFORCER
010702P	JRC	DTS	PJC	
020622P	JRC	DTS	PJC	
020620T	JRC	DTS	PJC	

(SIDE ROLL AND FRONTAL IMPACT PROTECTION)

ALUMINUM BODY (MAXIMUM O.A.L. 418")

(MAXIMUM O.A.H. 121")

417.50 CH" - 9.50" APPROX. OAL

NOTE: 1. ONOFF AUTOMATIC, THE CHAINS TO BE PROVIDED AT REAR  
 2. BATTERY COMPARTMENT LOCATED UNDER DRIVER'S SEAT RISER  
 3. DIESEL ENGINE FUEL TANK LOCATED UNDER DRIVER'S SEAT RISER  
 4. DIESEL ENGINE FUEL TANK LOCATED UNDER DRIVER'S SEAT RISER  
 5. DIESEL ENGINE FUEL TANK LOCATED UNDER DRIVER'S SEAT RISER  
 6. AIR ORLET WITH SHUT OFF VALVE LOCATED IN PUMP PANEL

DIMENSIONS SHOWN ARE APPROXIMATE AND ARE SUBJECT TO MINOR DEVIATIONS AS MAY OCCUR OR BE NECESSARY IN CONSTRUCTION. MINOR DETAILS NOT SHOWN.