



Pierce Velocity Combi-HDR
Burlington Fire Dist. 1
Job #28869

FEATURES & SPECIFICATIONS

- Pierce Velocity 84" Chassis with a 20" Raised Roof
- Detroit Diesel DD13 500hp 2013 EPA compliant Engine
- Allison EVS4000P Automatic Transmission
- TAK-4 Independent Front Suspension
- 23.5 Foot Combination Walk-in/Non Walk-in HDR
- Onan 35kW Single Phase PTO Drive Generator
- Delivered in April 2016

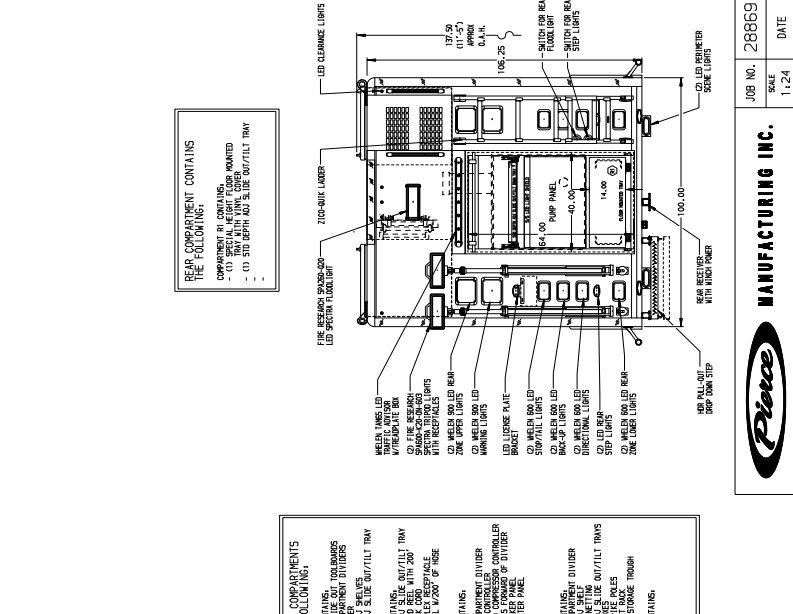
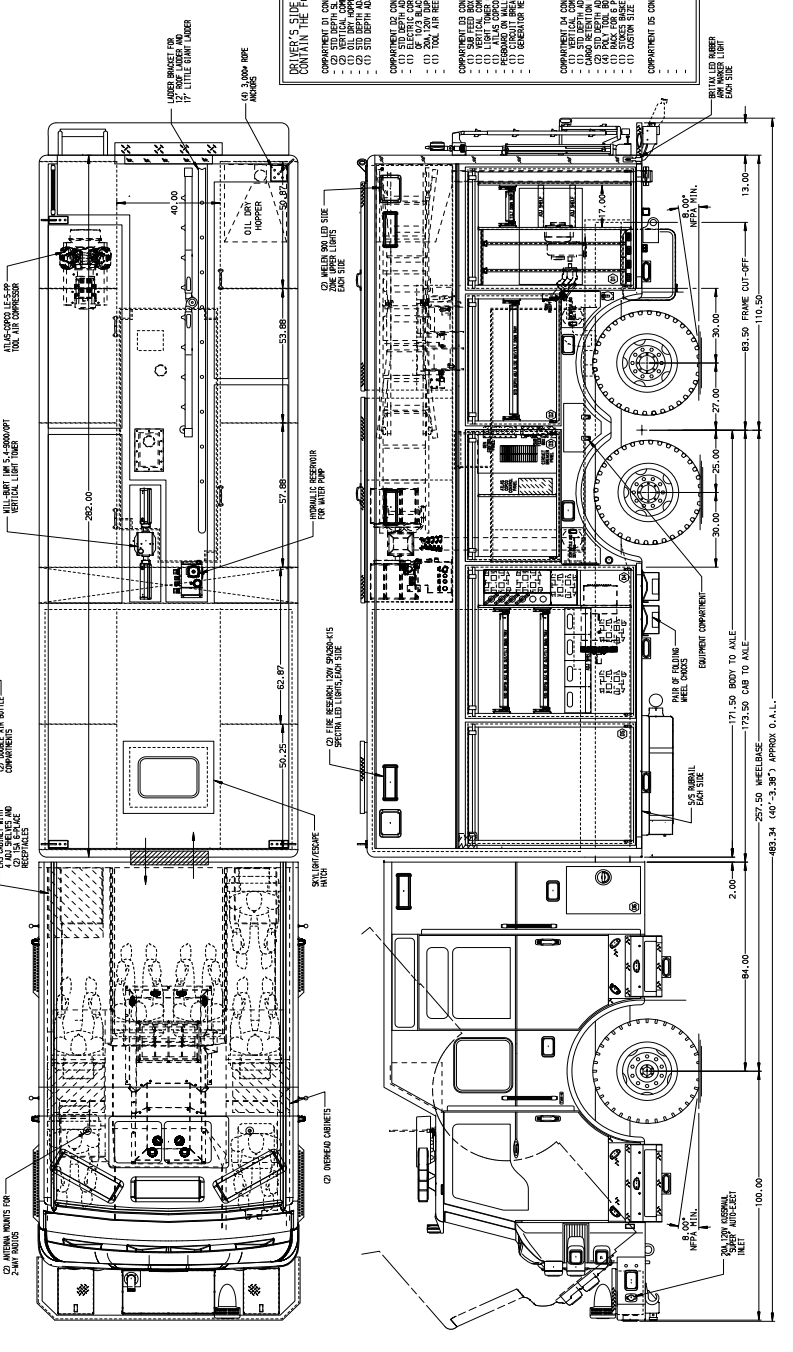
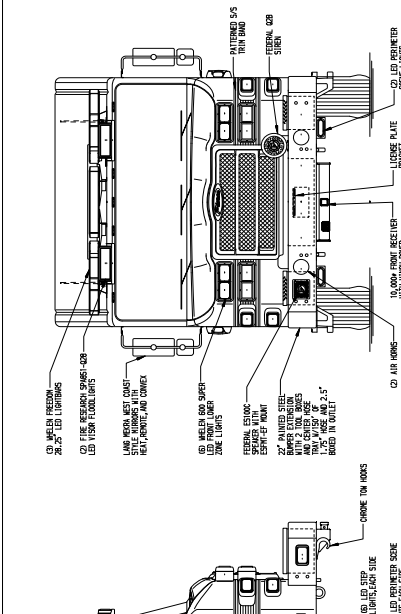
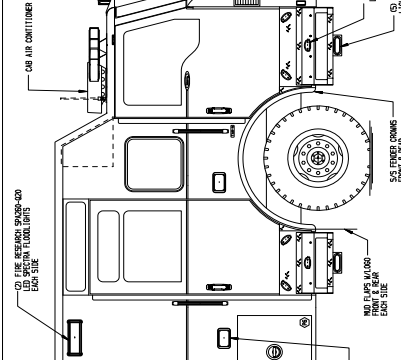
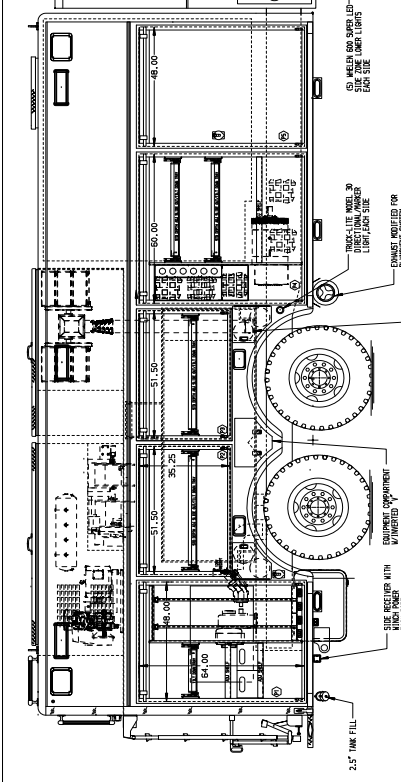


**FIRE & SAFETY
SERVICES**

South Plainfield, NJ
www.f-ss.com · 800-400-8017



- PASSENGER'S SIDE COMPARTMENTS CONTAIN THE FOLLOWING:**
- COMPARTMENT A1 CONTAINS:
 - (1) 20" DEPTH AND 5 1/2" WIDE BATTERY
 - (2) 20" DEPTH AND 5 1/2" WIDE BATTERY
 - (3) 20" DEPTH AND 5 1/2" WIDE BATTERY
 - (4) 20" DEPTH AND 5 1/2" WIDE BATTERY
 - COMPARTMENT A2 CONTAINS:
 - (1) 20" DEPTH AND 5 1/2" WIDE BATTERY
 - (2) 20" DEPTH AND 5 1/2" WIDE BATTERY
 - (3) 20" DEPTH AND 5 1/2" WIDE BATTERY
 - (4) 20" DEPTH AND 5 1/2" WIDE BATTERY
 - COMPARTMENT A3 CONTAINS:
 - (1) 20" DEPTH AND 5 1/2" WIDE BATTERY
 - (2) 20" DEPTH AND 5 1/2" WIDE BATTERY
 - (3) 20" DEPTH AND 5 1/2" WIDE BATTERY
 - (4) 20" DEPTH AND 5 1/2" WIDE BATTERY



REAR COMPARTMENT CONTAINS THE FOLLOWING:

- COMPARTMENT B1 CONTAINS:
 - (1) 20\"/>
- COMPARTMENT B2 CONTAINS:
 - (1) 20\"/>
- COMPARTMENT B3 CONTAINS:
 - (1) 20\"/>

DRIVER'S SIDE COMPARTMENTS CONTAIN THE FOLLOWING:

- COMPARTMENT C1 CONTAINS:
 - (1) 20\"/>
- COMPARTMENT C2 CONTAINS:
 - (1) 20\"/>
- COMPARTMENT C3 CONTAINS:
 - (1) 20\"/>

NOTE: DIMENSIONS SHOWN ARE APPROXIMATE AND ARE SUBJECT TO MINOR DEVIATIONS AS MAY OCCUR OR BE NECESSARY IN CONSTRUCTION. MINOR DETAILS NOT SHOWN.

MATERIALS:

- 20 GA. GALV. STEEL
- 16 GA. GALV. STEEL
- 12 GA. GALV. STEEL
- 10 GA. GALV. STEEL
- 8 GA. GALV. STEEL
- 6 GA. GALV. STEEL
- 4 GA. GALV. STEEL
- 3 GA. GALV. STEEL
- 2 GA. GALV. STEEL

MANUFACTURING INC.

JOB NO. 28869

SCALE	DATE	BY	CHECKED	APPROVED
1:12.5	11-24			

CHASSIS DATA:

MAKE	MODEL	TYPE	DATE
PIERCE	P-1	CHASSIS	11-24

TITLE: HEAVY DUTY RESCUE WALK/NON-WALK-IN COMBO WITH 500 GALLON WATER TANK FOR BURLINGTON TWP BRD OF FIRE COMM. DISTRICT #1

ED MILLER

DWG. NO. 28869AD-SH1

1 OF 2