



Pierce Saber Pumper
Borough of Clementon
Job #40767

FEATURES & SPECIFICATIONS

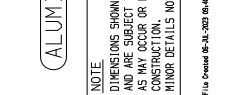
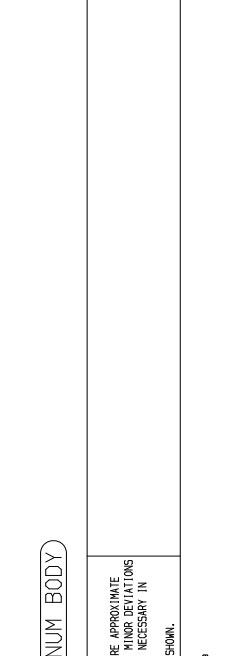
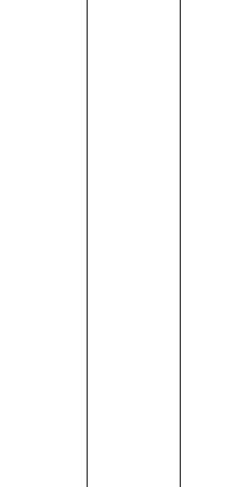
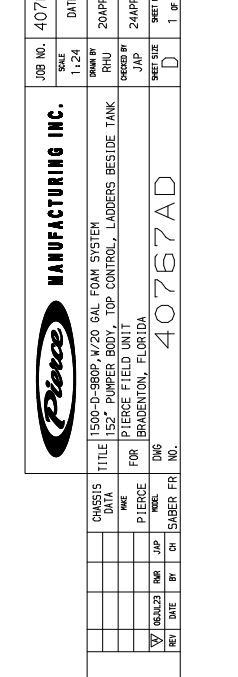
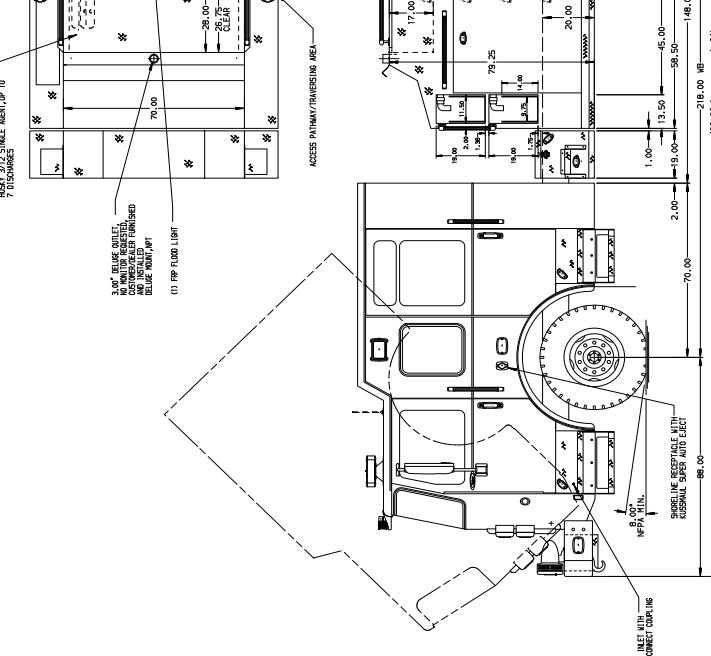
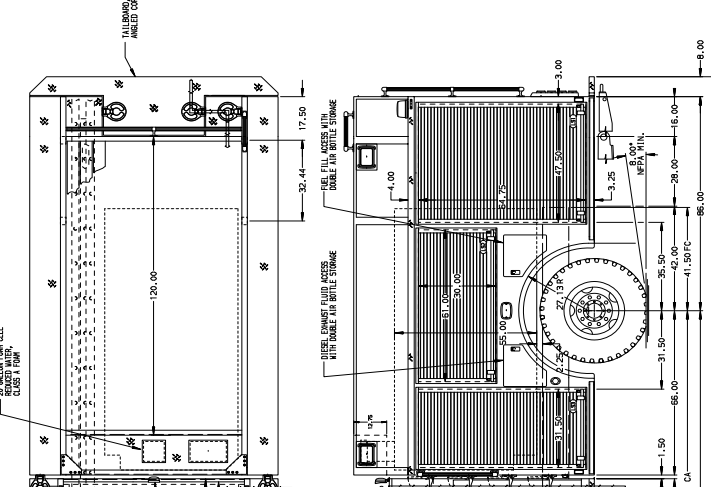
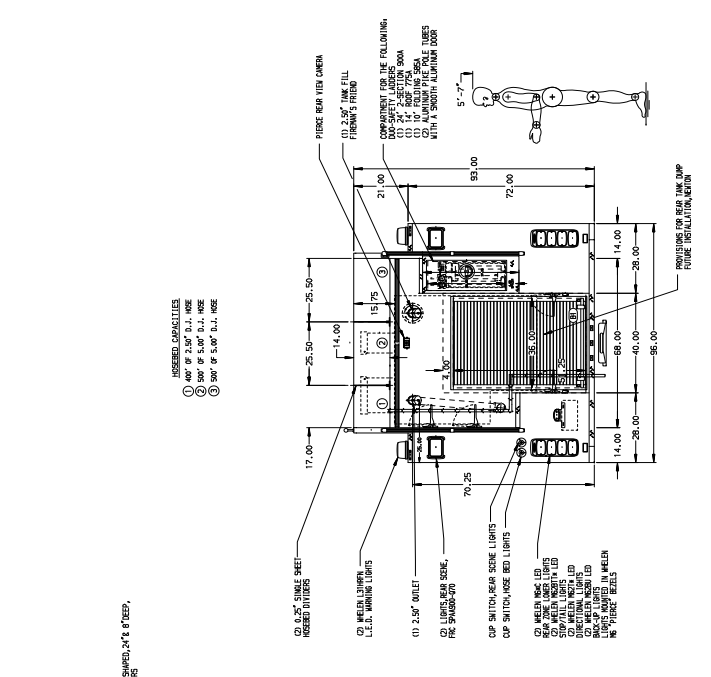
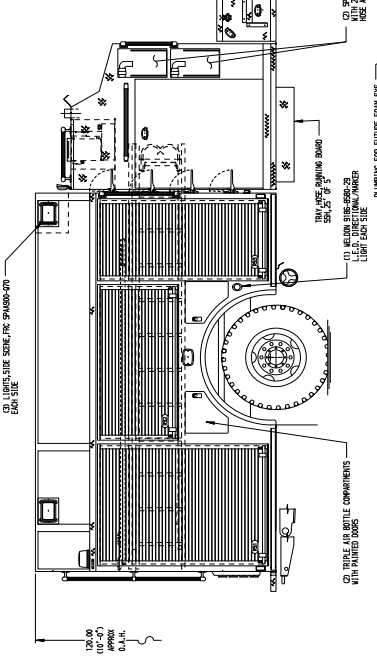
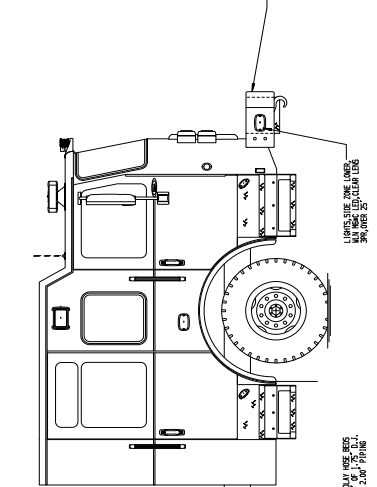
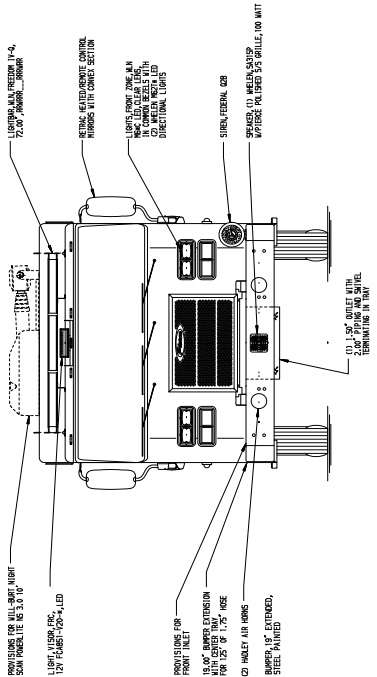
- Pierce Saber 70" Chassis with a 10" Raised Roof
- Cummins L9 450hp 2021 EPA compliant Engine
- Allison EVS3000P Automatic Transmission
- Dana Front and Rear Axles
- Waterous CSU 1500 GPM Single Stage Pump
- 1000 Gallon Poly Dry Side Water Tank
- Husky 3 Single Agent Foam System
- Delivered in June 2024



**FIRE & SAFETY
SERVICES**

South Plainfield, NJ
www.f-ss.com · 800-400-8017





Pierce MANUFACTURING INC.

JOB NO. 40767

SCALE 1:24 DATE 20APR23

DRAWN BY RRU

CHECKED BY JJP

DATE 24APR23

SHEET NO. D

1 OF 1

CHASIS	1500-D-380P-1/20 GAL FOAM SYSTEM
DATA	TITLE 152' PUMPER BODY, TOP CONTROL, LADDERS BESIDE TANK
NAME	PIERCE FIELD UNIT
MODEL	FOR BRADENTON, FLORIDA
REV	DATE BY CH I/SUBER FRI NO.

ALUMINUM BODY

NOTE: DIMENSIONS SHOWN ARE APPROXIMATE AND ARE SUBJECT TO MINOR DEVIATIONS AS MAY OCCUR OR BE NECESSARY IN CONSTRUCTION. MINOR DETAILS NOT SHOWN.

1/16" = 1" (SEE NOTE 85-311-2023 05-16-23)